

European Society of Lingual Orthodontics



Lingual appliance treatment

Records integration

Applicant n°: _____

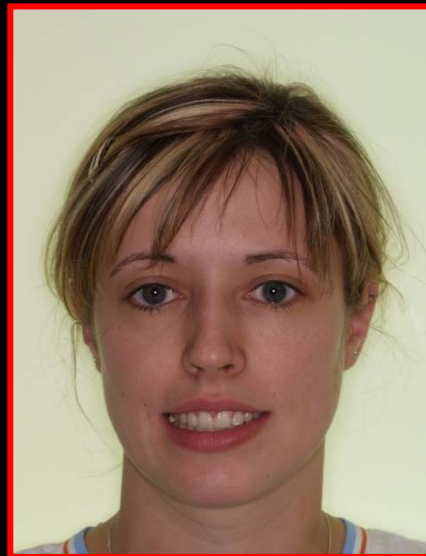
Last Name _____ First Name _____

Lingual Orthodontic Treatment Conny G.

ESLO Cannes 2008



**CABINET
D'ORTHODONTIE
DR GERMAIN BECKER
& ASSOCIÉS**



Cabinet de Luxembourg:
37, bd Pierre Dupong
L-1430 Luxembourg

Cabinet de Dudelange:
2, rue du Commerce
L-3450 Dudelange

Cabinet du Kirchberg:
Hôpital du Kirchberg
9, rue Edward Steichen
L-2540 Luxembourg

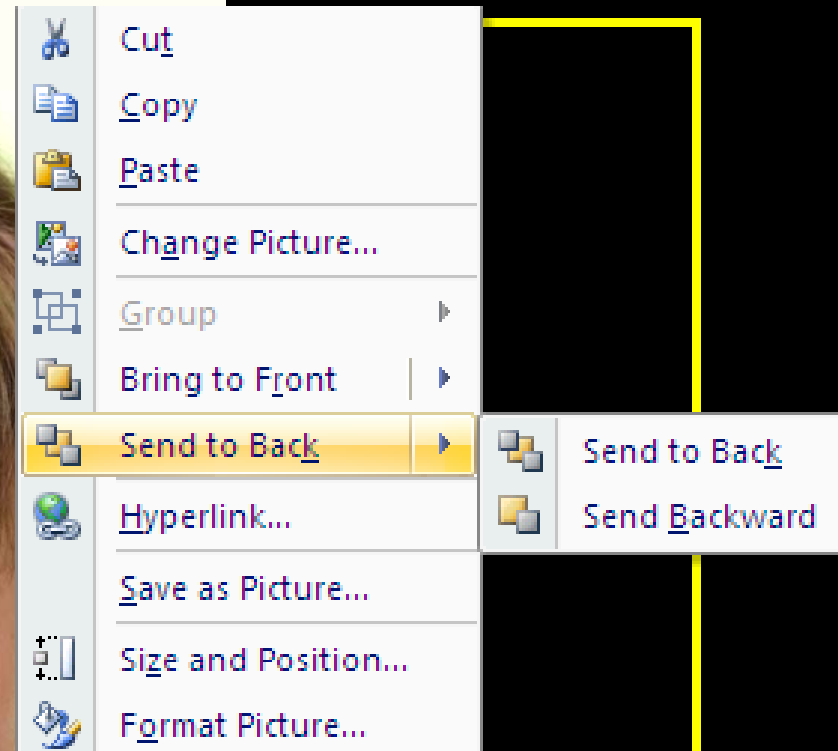
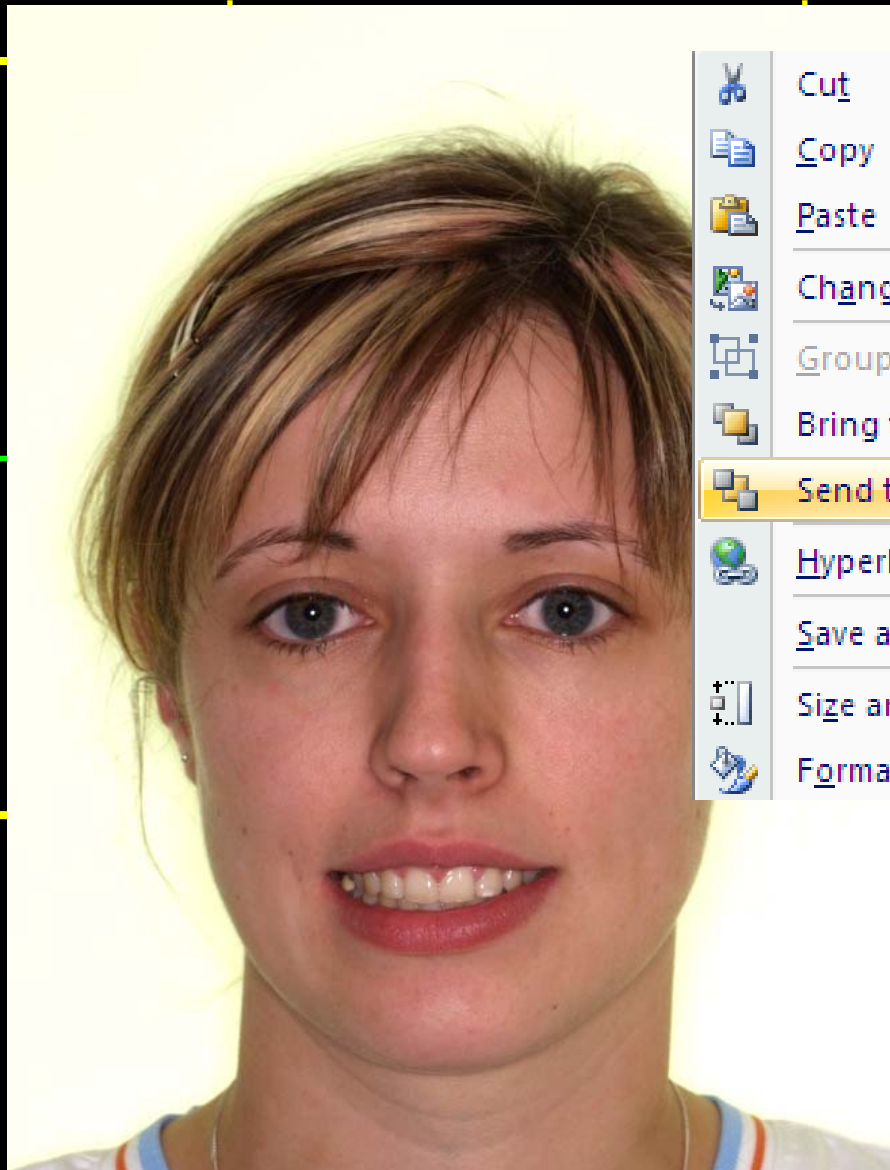
Cabinet de Wiltz:
30, Grand Rue
L-9530 WILTZ

Cabinet d'Ettelbruck:
40, rue de Bastogne
L-9011 ETTELBRUCK

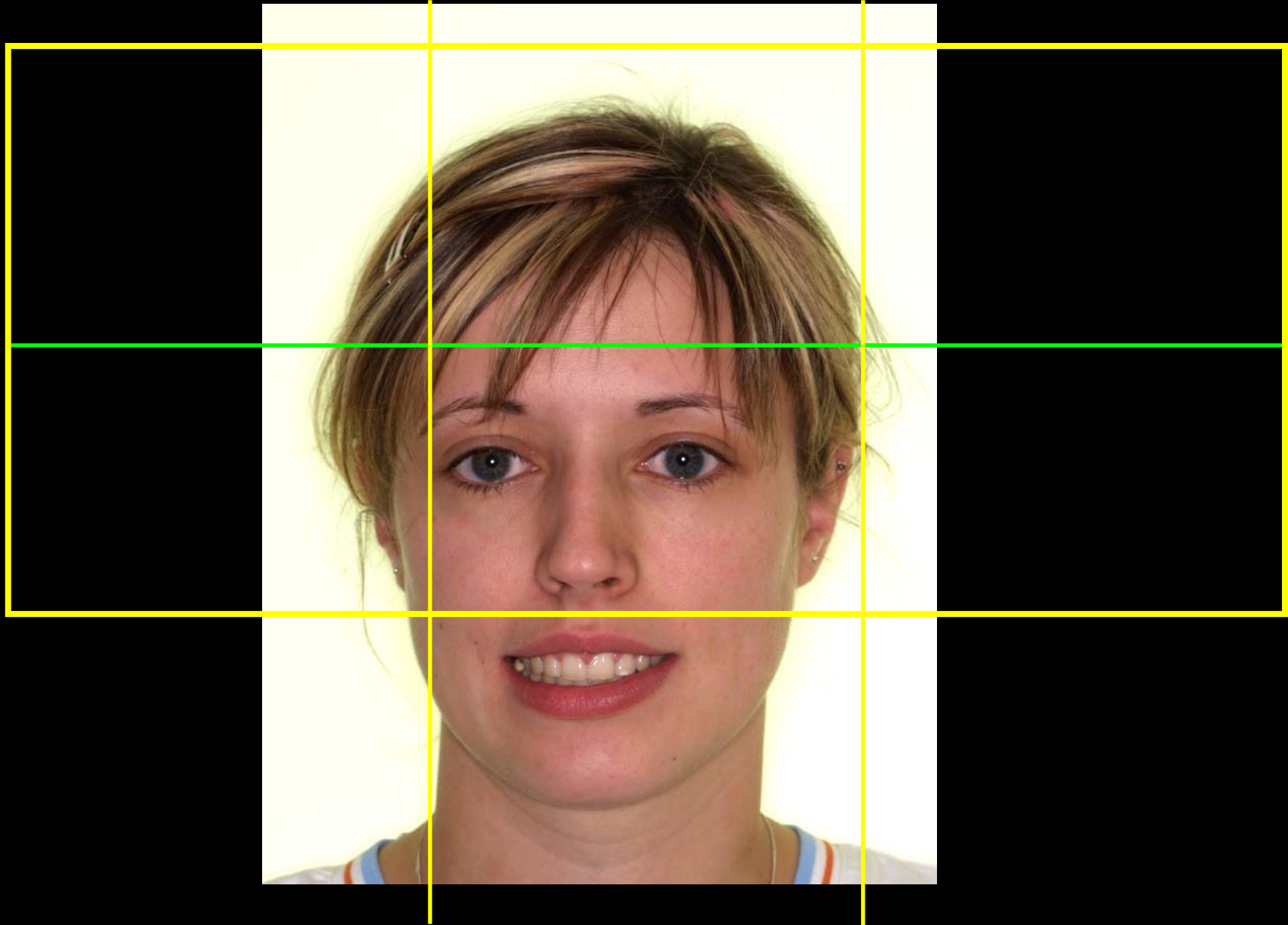
Lay out

A diagram illustrating a layout structure. It features a large black rectangle with a yellow border, divided into six cells by two vertical yellow lines and one horizontal green line. The horizontal green line is positioned in the lower half of the rectangle, creating two rows. The two vertical yellow lines are positioned in the left and right halves, creating three columns. The top row consists of three cells, and the bottom row consists of three cells.

Lay out



Lay out



Lay out



Lay out

